



28 June 2006

The Manager  
Company Announcements Office  
Australian Stock Exchange Limited  
PO Box H224 Australia Square  
SYDNEY NSW 2000

## **Announcement**

### **Aurora acquires Camel Hills Gold –Iron Ore Prospect Western Australia**

- Targets are shear-hosted gold and magnetite iron ore
- 40km of prominent linear magnetic highs through project area.
- Main gold stream sediment anomaly 13km by 3km
- Two main gold soil anomalies each 800m long.
- Rock samples to 1.4g/t gold at surface.
- No previous reported drilling

---

Aurora Minerals is pleased to announce that it has acquired a new exploration project, Camel Hills Project, covering the central part of the Errabiddy Shear Zone in the southern Gascoyne Province of Western Australia.

Interpretation of Aurora's in-house airmagnetic data coverage of the region has identified a sequence of prominent linear magnetic highs, striking for 40km east west through the project area.

Previous explorers had outlined several stream sediment and soil gold anomalies following reports of gold in local creeks.

The main gold stream sediment anomaly trends ENE for 13km and is 3km wide. The two main gold soil anomalies are each 800m long. A limited amount of rock sampling reported results up to 1.4g/t gold at surface.

No drilling of any of these anomalies appears to have been done.

The anomalies are coincident with a prominent linear airmagnetic high and mapped calc-silicate units in high-grade gneisses.

The Camel Hills Project comprises seven exploration licence applications for a total of approximately 1100km<sup>2</sup>. It lies approximately 150km west of the Fortnum Gold Mine and 220km northwest from the gold-mining town of Meekatharra. The Glenburgh gold deposit of Helix Resources is located 70km to the northwest of Aurora's project area in similar rocks.

## **Previous Exploration and Geological Setting**

The tenement applications cover 95kms strike of the +150km long Errabiddy Shear Zone (the "ESZ") which joins the northwestern margin of the Archaean-aged Yilgarn Craton onto the 2.5 to 1.9by aged Gascoyne Complex, a series of high-grade gneisses and granitic intrusives. The ESZ trends ENE and is a zone up to 10kms wide of tectonically interleaved and deformed slivers of the Yilgarn Craton and early Proterozoic metasedimentary and metavolcanic rocks, of which the Camel Hills Metamorphic Suite (CHM) extend across Aurora's property position.

Previous exploration has been limited with regional BLEG stream sediment sampling in response to reports of visible gold in panned concentrates from creeks draining the central Camel Hills range. This work covered a 90km strike of the ESZ and Camel Hills Metamorphic Suite with a sample density of roughly 1 sample per 2.2km<sup>2</sup>. This outlined a series of ENE trending clusters of anomalies at the +0.25ppb level, coincident with the ESZ and mapped outcrop of the CHM where it contains prominent calc-silicate horizons.

The easternmost anomaly, containing the highest individual BLEG value of 21.2ppb, lies within Aurora's tenements, trends ENE for 13km and is about 3km wide. The anomaly is open to the east and NE where there are no samples recorded.

Follow-up appears to have been limited to a soil sample survey over a 6km by 3.5km E-W grid. This survey outlined two parallel ENE trending gold-in-soil anomalies, both 800m long at the 5ppb gold contour, with values up to 240ppb gold. Rock chips in the northern soil anomaly are reported to grade up to 1.4g/t from a sheared quartz lens. Several other gold-in-soil anomalies occur with no apparent follow-up.

Other BLEG stream sediment sample anomaly clusters lie to the south and far west in Aurora's tenements, related to the ESZ, but no further work appears to have been done.

The southwestern part of Aurora's tenement position appears not to have been covered by this previous exploration despite lying within the wide ESZ.

## **Iron Ore Potential**

The magnetic highs at Camel Hills appear to coincide with mapped calc-silicate horizons within the Camel Hills Metamorphic Suite as outlined on published GSWA maps, and also with the main soil and stream anomaly cluster (as above).

An 11.3km section of this magnetic high has a signature which the Company interprets as similar to that over the Southdown magnetite iron deposit, which is located in a similar geological setting in deformed Proterozoic rocks flanking the southern margin of the Yilgarn Craton.

Rafts of Banded Iron Formation have been identified in mapping along strike from both the Southdown magnetite deposit and Camel Hills.

One of the initial steps towards development of iron ore infrastructure in the Mid-West region began in early 2006 with the commencement of a tarmac road from Great Northern Highway at the town of Cue, past Aurora's Ryansville Project, and on to Murchison Metals' Jack Hills iron ore deposit to the north. Camel Hills is a further 90km to the north of Jack Hills.

## **Proposed Exploration by Aurora**

Aurora Minerals plans to complete more prospecting and soil sampling on the anomaly and its extensions to select drill targets.

## **Targets Sought**

Examples of mineral deposits hosted in Proterozoic rocks flanking the margins of the Yilgarn Craton include:

Gold deposits:

- Tropicana Gold deposit of Independence Gold Ltd, and
- Glenburgh Project of Helix Resources Ltd which is located to the north west of Camel Hills Project.

Magnetite deposits:

- Southdown magnetite iron deposit of Grange Resources Limited.

Robert S Taylor  
Managing Director

The information in this report that relates to Exploration Results, Mineral Resources or Ore Reserves is based on information compiled by Dr Robert S Taylor, a Member of The Institute of Materials Minerals and Mining and Mr Garry P O'Hara, a corporate member of the Australasian Institute of Mining and Metallurgy.

Robert Taylor, and Garry O'Hara have sufficient experience which is relevant to the style of mineralization and type of deposit under consideration and to the activity which they are undertaking to qualify as Competent Persons as defined in the 2004 Edition of the 'Australasian Code for Reporting of Exploration Results, Mineral Resources and Ore Reserves'. Robert Taylor and Garry O'Hara consent to the inclusion in the report of the matters based on his information in the form and context in which it appears.

## **CONTACTS**

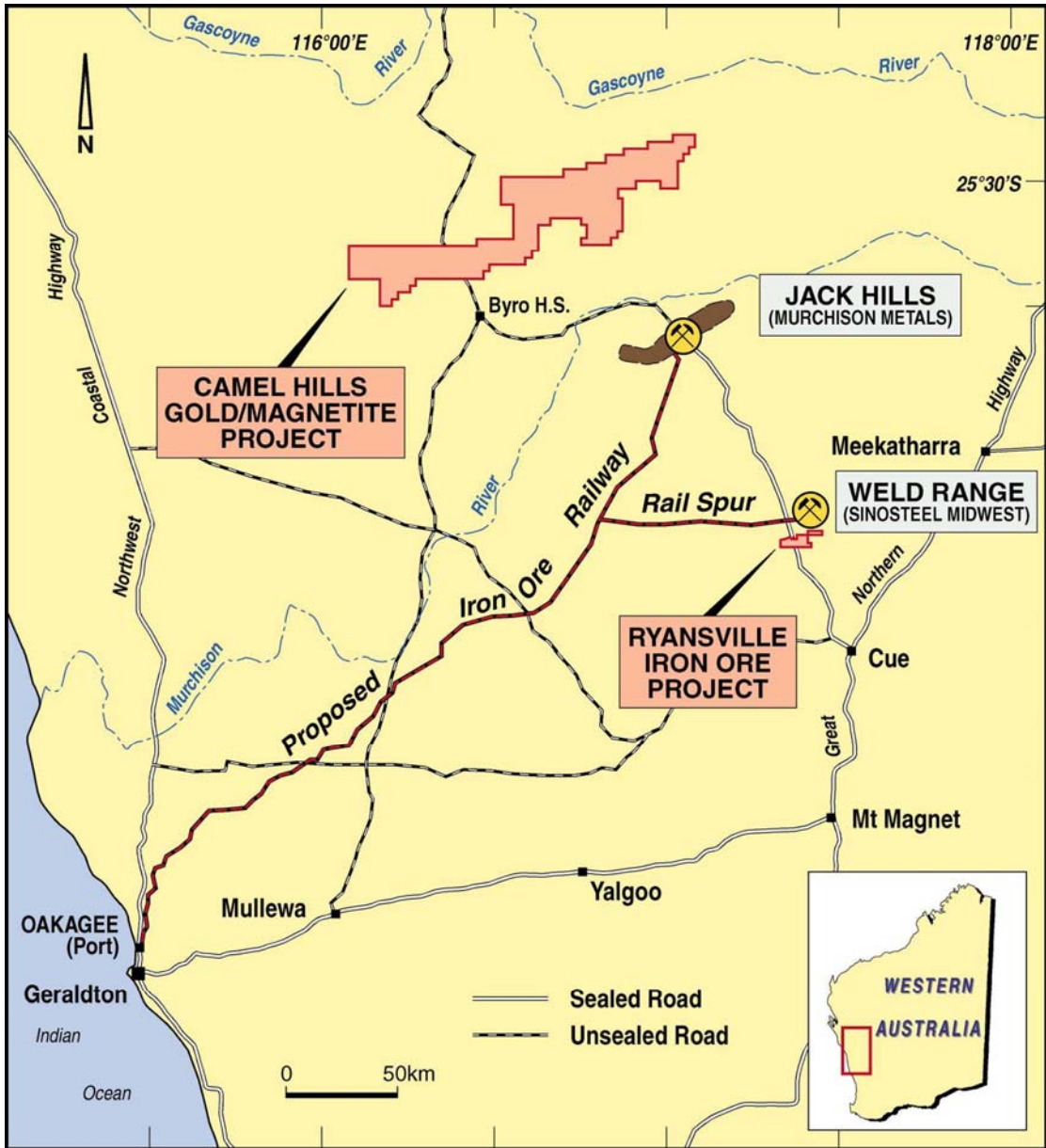
Email: [info@auroraminerals.com](mailto:info@auroraminerals.com)

Website: [www.auroraminerals.com](http://www.auroraminerals.com)

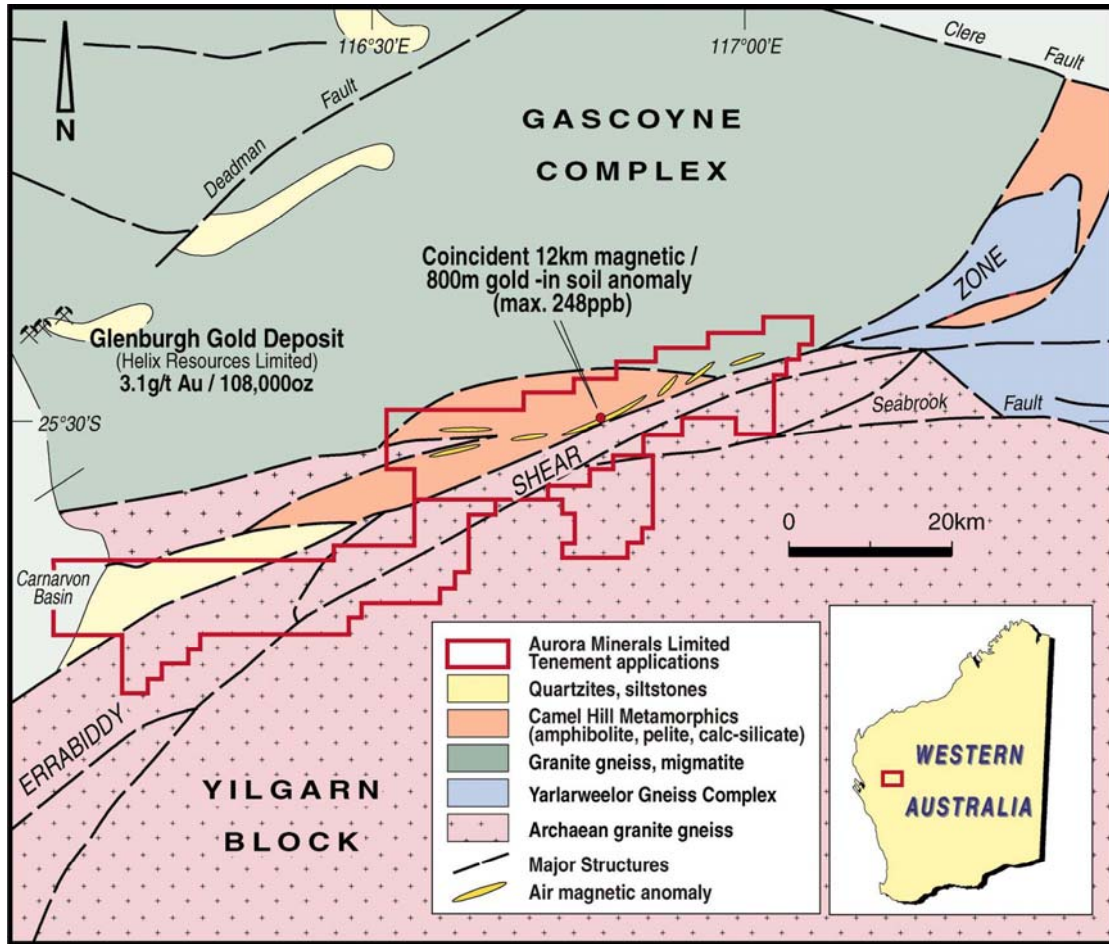
Investor Relations: Ken Banks

Mobile Australia 0402 079 999

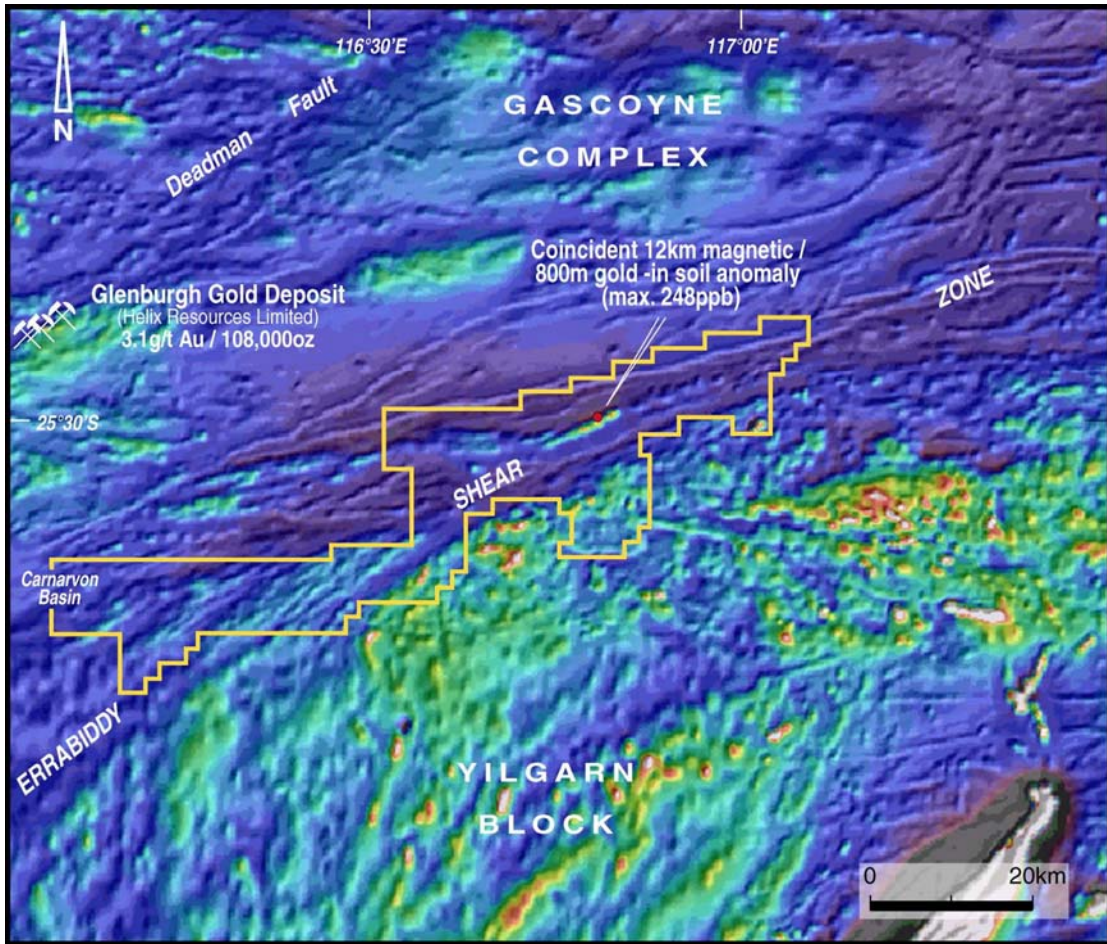
New Zealand 0061 402 079 999



**Ryansville / Camel Hills Projects  
Project Location and Infrastructure**



**Camel Hills Project  
Aurora Minerals Limited 100%  
Regional Geological Setting**



**Camel Hills Project  
Aurora Minerals Limited 100%  
RTP Magnetic Image**