



23 September 2005

The Manager  
Announcements  
Company Announcements Office  
Australian Stock Exchange Limited  
PO Box H224 Australia Square  
SYDNEY NSW 2000

## **VISIBLE GOLD FOUND AT JUNCTION PROSPECT ROCKVILLE**

Aurora Minerals is pleased to announce that its geologists have found *visible gold in a quartz vein at the Junction Prospect* at its Rockville Project on the South Island of New Zealand.

The bedrock geology of the Junction area has only recently been revealed by the clearing of thick scrub and cutting of new tracks by the landowners, and this is probably the reason it was missed by previous exploration companies.

Large quantities of coarse alluvial gold were reported in a gold rush in this area in the 1850's from creeks over an area of approximately 5 km by 2 km, (including Appos Flat where nuggets up to 2-3oz each were reportedly recovered) but no local source was discovered by these early prospectors.

The significance of finding visible gold by Aurora is that it clearly indicates the historic alluvial coarse gold was, at least, partially sourced from bedrock within the Junction Prospect and that the extensive alluvial workings in creeks draining the area indicate the bedrock gold mineralization is likely to be more widespread than identified to date.

The new find by Aurora also supports the previously reported highly anomalous gold assay value from only two samples taken by the Company from altered bedrock at Junction earlier this month.

A significant number of narrow quartz veins at Junction trend East-Northeast, parallel to schistosity. These appear to reside within a corridor of north trending lineaments which may prove to be bounding faults. The gold-bearing vein is north east trending within this corridor.

### **Assay Results**

The Company has taken a significant number of samples from Junction Prospect and laboratory assay results are expected in the coming weeks.

### **Details**

During prospecting at Junction, Aurora's geologists have found many short strike length narrow quartz veins within the alteration zones identified previously. Host rocks are a package of Cambrian quartz-chlorite-mica schists that have a sericite and pyrite alteration overprint in the vicinity of identified gold mineralization.

A 3 to 4 metre wide zone of quartz veining (100mm wide quartz veins) containing arsenopyrite plus pyrite was located approximately 100 metres north of RV017 (1.01ppm Au, 6ppm Ag, 240 ppm As). In one of these veins coarse visible gold was identified. It has the form of a flat ovoid, half of which is still embedded in the quartz. The long axis is about 5mm long.

This clearly indicates gold mineralization is insitu. The extensive alluvial workings in almost all the creeks draining the area would suggest mineralization is more widespread than so far identified.

There also appears to be a correlation between gold and arsenic at the Junction Prospect.

Pyritic alteration has been identified in soil augering some 700m south of RV017 and pyritic alteration has been found in a creek some 700m to the northeast.

Significant follow up groundwork is required.

### **Base Metals**

**As previously reported, grab samples from the Johnston's United workings, 4.5km South of Junction, assayed up to:**

**RV005** 4.1g/t gold, 348g/t silver, 0.3% zinc, 43.3% lead ; and

**RV004** 1.4g/t gold, 36g/t silver, 30.6% zinc, 4.9% lead.

These high grades occur in the southern part of the area.

Previous exploration in the 1970's involved only 5 drill holes in the south of the prospect area. A local contractor suggested some more drilling was carried out near Johnston's United; however research and field observations to date have not revealed if or where this occurred.

### **Next Phase of Prospecting**

Aurora Minerals is planning a more extensive low impact program of geological mapping, surface prospecting, airborne magnetics and airborne EM geophysical surveys at Rockville. The focus will be on gold.

### **Minerals Ownership and Consents**

Relevant searches show that all gold, silver and base metals in the Aorere Goldfield area and the Junction Prospect where the Company is currently prospecting are included in Aurora's rights under its Rockville Prospecting Permit 39 273, and that there is no third-party private ownership of minerals.

Any future drilling or mining proposed by the Company would be subject to the provisions of the Resource Management Act and the Crown Minerals Act which includes requiring council approval, requiring the Company to enter access agreements with relevant stakeholders including landowners and land occupiers, the Department of Conservation (at Johnston's United and Richmond Hill which are in a stewardship area under the Conservation Act and as such require consents for all forms of exploration) and consultation with Maori. The freehold farmland is subject to any possible future claim under the Treaty of Waitangi; however the Company's lawyers advise that this would be a rare occurrence and in that event compensation would be payable.

To date there has been good cooperation from local landholders and the Department of Conservation for Aurora Minerals to conduct low impact surface prospecting, though access to some parts of the area is hampered by thick gorse bush.

More information regarding land access and related information is contained on the Company's website at.

<http://www.auroraminerals.com/default.aspx?l=2&p=39>

### **Hazelbrook Joint Venture**

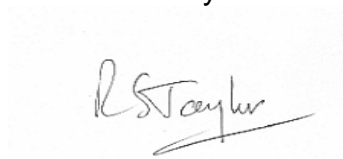
The Company is now achieving encouraging results from two projects in New Zealand – at the Rockville Project reported above, and at its Hazelbrook Joint Venture on the North Island where it is in a NZ\$10 million joint venture with Emerald Mining Limited.

The Hazelbrook aeromagnetic survey which the Company commenced in late July has now been completed over a significant area including the joint venture's discoveries at the Backyard and Toolshed prospects where it is exploring for a large epithermal gold deposit.

The magnetics data is currently being assessed for additional targets for epithermal gold, and results will be reported in due course.

Soil results from Te Mata have yet to be assessed but appear to contain some encouraging anomalies especially for arsenic, a gold pathfinder. These will be assessed and reported.

Yours faithfully



**Robert S Taylor**  
Managing Director

The information in this report that relates to Exploration Results, Mineral Resources or Ore Reserves is based on information compiled by Dr Robert S Taylor, a Member of The Institute of Materials Minerals and Mining, Mr Nick Hazard a corporate member of the Australasian Institute of Mining and Metallurgy and Mr Garry P O'Hara, a corporate member of the Australasian Institute of Mining and Metallurgy.

Robert Taylor, Nick Hazard and Garry O'Hara have sufficient experience which is relevant to the style of mineralization and type of deposit under consideration and to the activity which they are undertaking to qualify as Competent Persons as defined in the 2004 Edition of the 'Australasian Code for Reporting of Exploration Results, Mineral Resources and Ore Reserves'. Robert Taylor, Nick Hazard and Garry O'Hara consent to the inclusion in the report of the matters based on his information in the form and context in which it appears.

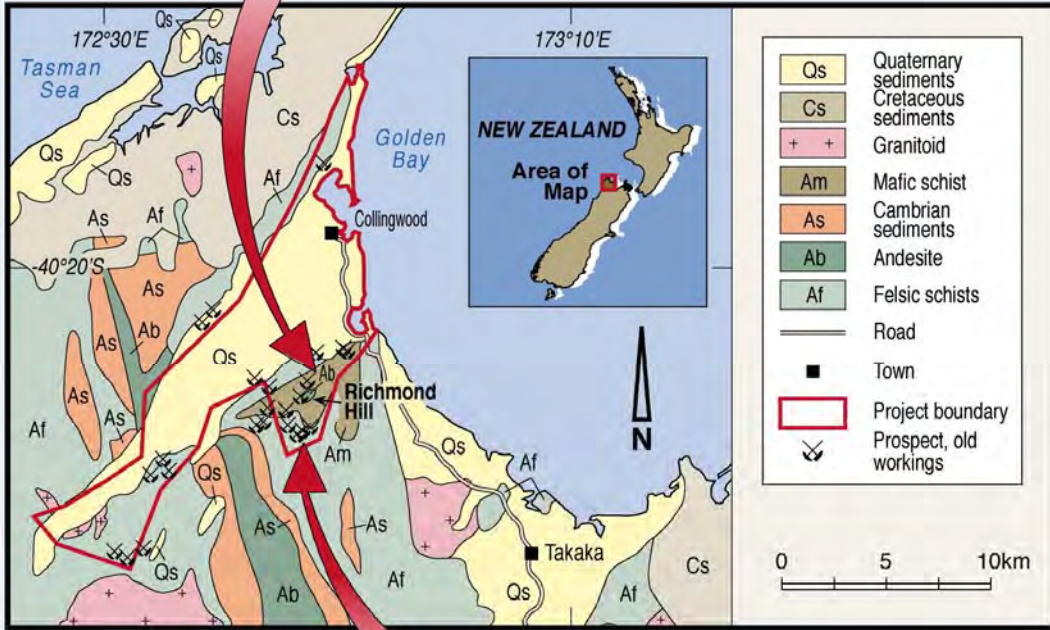
## **CONTACTS**

Email: [info@auroraminerals.com](mailto:info@auroraminerals.com)

Website: [www.auroraminerals.com](http://www.auroraminerals.com)

Investor Relations: Ken Banks  
Mobile Australia 0402 079 999  
New Zealand 0061 402 079 999

JUNCTION AREA		
Sample	Au g/t	Ag g/t
RV017	1.0	6.0



JOHNSTON UNITED				
Sample	Au g/t	Ag g/t	Pb %	Zn %
RV005	4.1	348	43.3	0.3
RV004	1.4	36	4.9	30.6
RV006	0.9	25	2.6	0.3
RV003	0.5	1.9	<0.1	<0.1

**AURORA MINERALS LIMITED  
Rockville Project  
Significant Rock Sample Results**

Total number of samples collected and analysed is 24